



A MacGregor Company

WINCHES

SERVICE BULLETIN – SB 1000-133

SB 1000-133

Operate the mooring winch with autotension

2019-08-22

Rev. A

Applicable for winch type(s):	All
Related item numbers	N/A
Distribution	Limited – do not distribute to customer without prior permission

1 Scope and Target Group

⚠ WARNING

- ✓ Always refer to the user manual for additional information and safety warnings.
- ✓ Only perform this task if you are qualified to carry out the steps described below.
- ✓ Always make sure that the tasks described in this bulletin are intended for the equipment you are working on.
- ✓ If you are unsure about the workflow, steps or qualification, contact your TTS aftersales service contact.

Your aftersales service contact:

TTS Marine GmbH
An der Reeperbahn 6
D-28217 Bremen
Germany

Telephone: +49(421) 520 08-0
Telefax : +49(421) 52008-749
E-Mail: service@ttsgroup.com



A MacGregor Company

WINCHES

SERVICE BULLETIN – SB 1000-133

2 Purpose

This service bulletin is an overview of the procedure for operating the windlass and mooring winch using autotension. Not all windlasses and mooring winches have the autotension feature. If you are unsure if your equipment has this feature, contact your TTS aftersales representative for more information.

FOR CUSTOMER USE ONLY



A MacGregor Company

WINCHES

SERVICE BULLETIN – SB 1000-133

3 Auto-tension operation for the mooring winch (CSH)

NOTICE

Do not use two ropes under load at one winch in automatic mode. (Rope at two drums or one drum and warping head.)

NOTICE

The automatic mode only works correctly if the rope is used on the first layer of the rope drum working part.

NOTICE

Make sure that you never use the automatic mode when the drum brake is closed.

NOTICE

In order to operate the mooring winch in auto-tension mode it is essential to ensure the function of the power pack. Alarm will be displayed in case of malfunction of the power pack as this may lead to misoperation of the auto-tension function at the mooring winch.

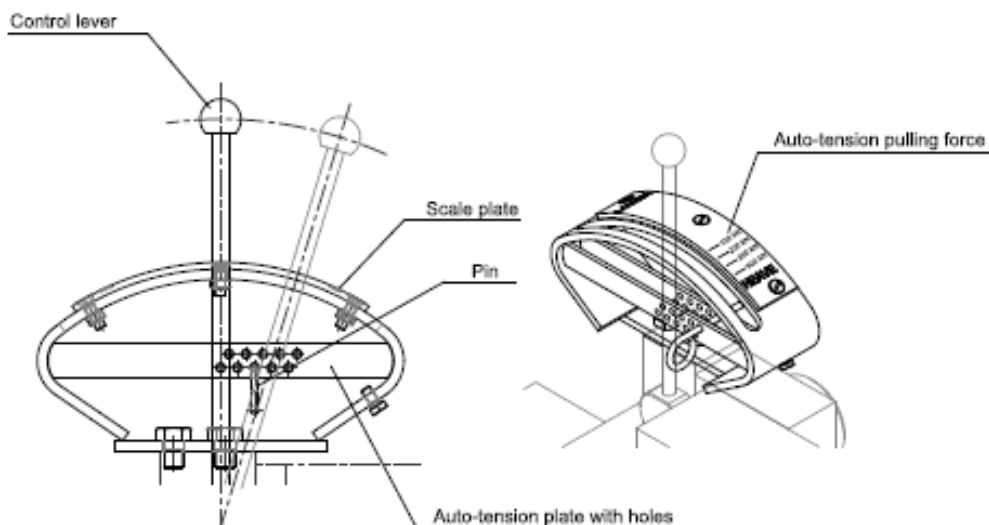


Fig. 1 Overview, auto-tension operation of the mooring winch

NOTICE

Auto-tension pulling force on above figure is an example. Check the actual auto-tension fulling force on the equipment.

1. Make sure that you know all safety and operation instructions before you operate the equipment.
2. Start the power pack at the switch cabinet or remote control box.
3. Engage the drum clutch on the rope drum.
4. Open the drum brake.
5. To operate the rope drum, move the control lever either in the direction LOWER or HEAVE.
6. When the rope drum rotates, move the lever slowly to get the necessary speed and keep the lever in that position.



A MacGregor Company

WINCHES

SERVICE BULLETIN – SB 1000-133

7. Keep the control lever to put the pin into the holes on the auto-tension plate.
Now the mooring winch is auto-tension mode.
8. To stop the operation, remove the pin from the hole. The control lever goes back to the ZERO position.
Now the mooring winch is now back in manual mode.
9. Close the drum brake.
10. Disengage the drum clutch from the rope drum.
11. Stop the power pack at the switch cabinet or remote control box.

NOTICE

Do not turn off the main switch at the switch cabinet. If you turn off the main switch at the switch cabinet, the space heater in the electric motor and the switch cabinet will not work.

FOR CUSTOMER USE

4 Auto-tension operation for the mooring winch (CEH)

NOTICE

Do not use two ropes under load at one winch in automatic mode. (Rope at two drums or one drum and warping head.)

NOTICE

The automatic mode only works correctly if the rope is used on the first layer of the rope drum working part.

NOTICE

Make sure that you never use the automatic mode when the drum brake is closed.

NOTICE

In order to operate the mooring winch in automatic mode it is essential to ensure the function of the hydraulic system. Alarm will be displayed in case of malfunction of the hydraulic system as this may lead to misoperation of the automatic function at the mooring winch.

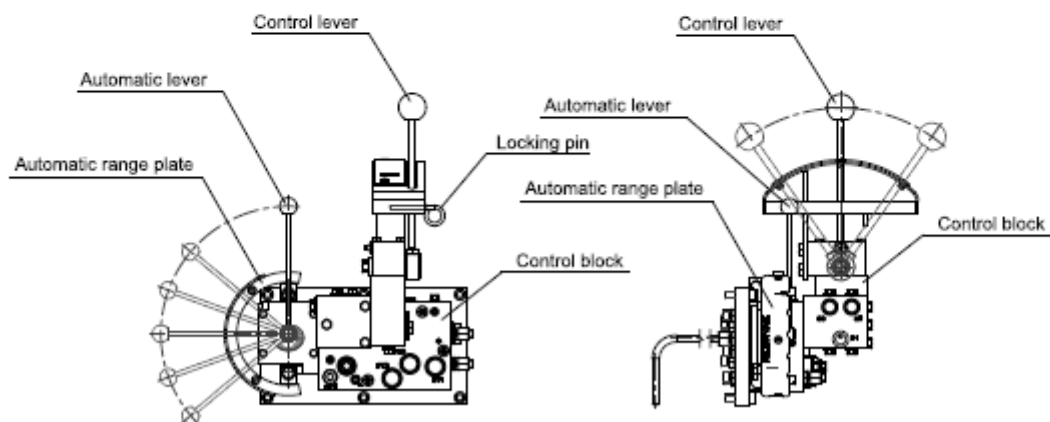


Fig. 2 Overview, automatic operation of the mooring winch

FOR C



A MacGregor Company

WINCHES

SERVICE BULLETIN – SB 1000-133

1. Make sure that you know all safety and operation instructions before you operate the equipment.
2. Open the air-flap.
3. Start the e-motor by pushing the start button on the control panel.

NOTICE

Make sure that e-motor is running on indicator lamp.

4. Engage the drum clutch on the rope drum.
5. Open the drum brake.
6. Set the automatic lever to the required tension range.
7. Move the control lever to full deflection in the heave direction.
The mooring winch stops operating when the required tension is achieved.
8. Lock the control lever with pin in the full deflection position.
The mooring winch keeps the pre-set tension.
9. To stop the operation, move the automatic lever to "ZERO" position.
10. Remove the pin from the control lever and move the control lever to "ZERO" position.
11. Close the drum brake.
12. Disengage the drum clutch from the rope drum.
13. Stop the e-motor by pushing the stop/reset button on the control panel.
14. Close the air-flap.

FOR C



A MacGregor Company

WINCHES

SERVICE BULLETIN – SB 1000-133

5 Auto-tension operation for the mooring winch (E-winch)

1 Automatic operation

NOTICE

Do not use two ropes under load at one winch in automatic mode. (Rope at two drums or one drum and warping head.)

NOTICE

The automatic mode only works correctly if the rope is used on the first layer of the rope drum working part.

NOTICE

Make sure that you never use the automatic mode when the drum brake is closed.

1. Make sure that you know all safety and operation instructions before you operate the equipment.
2. Make sure that the related switch cabinet is turned on.
3. Push the 'takeover' button at the related control column. The button turns green.
4. Engage the drum clutch.

NOTICE

Use the creep speed buttons for approaching shift position of drum clutch.

5. Open the drum brake.
6. To switch from manual to automatic mode, it is necessary to pre-tension the rope tension load to over 20% while in the manual mode.
7. Select the desired tension steplessly from 20% to 100% with the OFF / ON / AUTOMATIC on the related control column. The mooring winch is now in automatic mode.

NOTICE

To switch back to manual mode, turn the OFF / ON / AUTOMATIC to "ON (manual mode)".
To turn off the mooring winch, turn the OFF / ON / AUTOMATIC to "OFF".

FOI



A MacGregor Company

WINCHES

SERVICE BULLETIN – SB 1000-133

6 Auto-tension operation for the mooring winch without the takeover button

1 Automatic operation

NOTICE

Do not use two ropes under load at one winch in automatic mode. (Rope at two drums or one drum and warping head.)

NOTICE

The automatic mode only works correctly if the rope is used on the first layer of the rope drum working part.

NOTICE

Make sure that you never use the automatic mode when the drum brake is closed.

1. Make sure that you know all safety and operation instructions before you operate the equipment.
2. Make sure that the related switch cabinet is turned on.
3. Select the "ON" on the "ON/OFF/AUTOMATIC" switch at the related control column.
4. Engage the drum clutch.

NOTICE

Use the creep speed buttons for approaching shift position of drum clutch.

5. Open the drum brake.
6. To switch from manual to automatic mode, it is necessary to pre-tension the rope tension load to over 20% while in the manual mode.
7. Select the desired tension steplessly from 20% to 100% with the OFF / ON / AUTOMATIC on the related control column. The mooring winch is now in automatic mode.

NOTICE

To switch back to manual mode, turn the OFF / ON / AUTOMATIC to "ON (manual mode)".
To turn off the mooring winch, turn the OFF / ON / AUTOMATIC to "OFF".

FOR