

SB 88-107**Lubrication Instruction**

2018-11-28

Rev. B

1 Scope and Target Group

⚠ WARNING

- ✓ Always refer to the user manual for additional information and safety warnings.
- ✓ Only perform this task if you are qualified to carry out the steps described below.
- ✓ Always make sure that the tasks described in this bulletin are intended for the equipment you are working on.
- ✓ If you are unsure about the workflow, steps or qualification, contact your TTS aftersales service contact.

Your aftersales service contact:

TTS Marine GmbH
An der Reeperbahn 6
D-28217 Bremen
Germany

Telephone: +49(421) 520 08-0
Telefax : +49(421) 52008-749
E-Mail: service@ttsgroup.com

2 Lubrication

To make sure that the product is running properly and for a long product life, perform lubrication periodically according to the information in this chapter.

WARNING

Wear the protective clothing when you work with the lubricant.
Many lubricants can cause skin irritation and eye inflammation.
Obey all safety instructions.

3 Lubricants quantity Mooring winch

Application point	Estimated quantity/set	Sets/ship	Total / ship	Remarks
Gear case	420 liter	10	4200 liter	Oil group A
Drum Drum clutch Drum band brake Pedestal bearing Gear case roller bearing	5 kg	10	50 kg	Grease group G

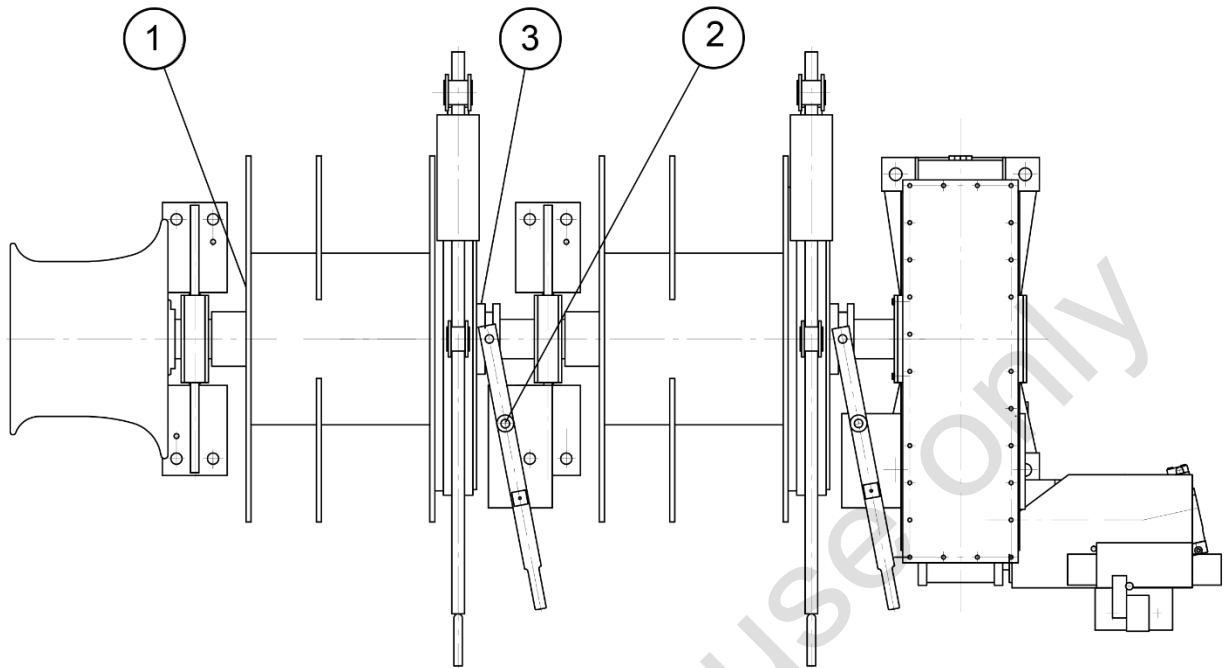


Figure 1: Lubrication points of the mooring part

1. Grease nipple rope drum
2. Grease nipple drum clutch lever
3. Grease nipple coupling

NOTICE

Grease the bushings while the main shaft is turning.

Stop greasing when the grease is visible around both bushings of the rope drum.

Component	Problem	Possible Solution
Bushing	Squeaking noises, dry, overheated lubrication	Check the bushing lubrication. Grease the bushings, if necessary

4 Lubrication point of the gear case

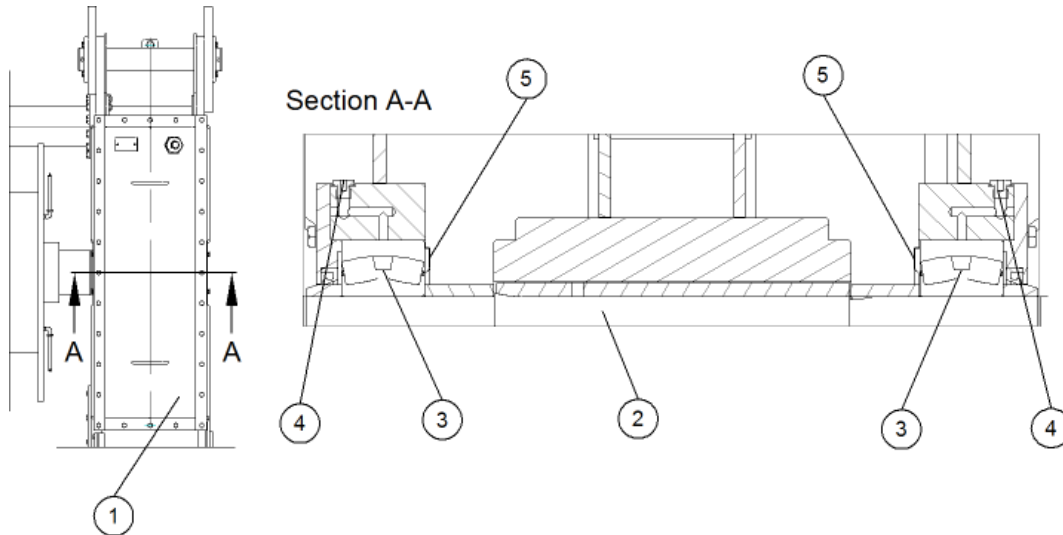


Figure 2: Lubrication points of the gear case

1. Inspection cover
2. Main shaft
3. Roller bearing
4. Screw plug
5. Circumference ring

Lubricate the gear case bearing

6. Open the inspection cover of the gear case in order that inner main bearing can be observed.
7. Replace the screw plugs by grease nipples (refer to figure 11)
8. Grease the roller bearing while the main shaft is turning.
9. Stop greasing when the grease is visible along the edge of the circumference ring.
10. Change back the screw plug in order to close the grease duct.
11. Close the inspection cover of the gear case.

NOTICE

Take care for the sealing while opening and closing the inspection cover

Component	Problem	Possible Solution
Bearings	Squeaking noises coming from the bearings.	Check the bearing lubrication by opening the cover. Grease the bearings, if necessary.