

## PRODUCT SPECIFICATION

# Service

The long life expectancy of new port and material handling equipment makes quality service central to customers who have invested in new equipment. Customers are free to request any of the qualified service engineers from any TTS service station who will then be dedicated to the customer for the duration of the service.

TTS PORT AND MATERIAL HANDLING DIVISION



### Service when needed

All port and material handling equipment requires regular servicing, carried out efficiently by trained personnel. TTS offers servicing facilities to all operators throughout the world, both at short and planned notice.

Planned maintenance is essential to ensure that items of equipment continue to operate in the optimum manner. TTS offers special programmes for such work, as well as for those requiring individual service operations.

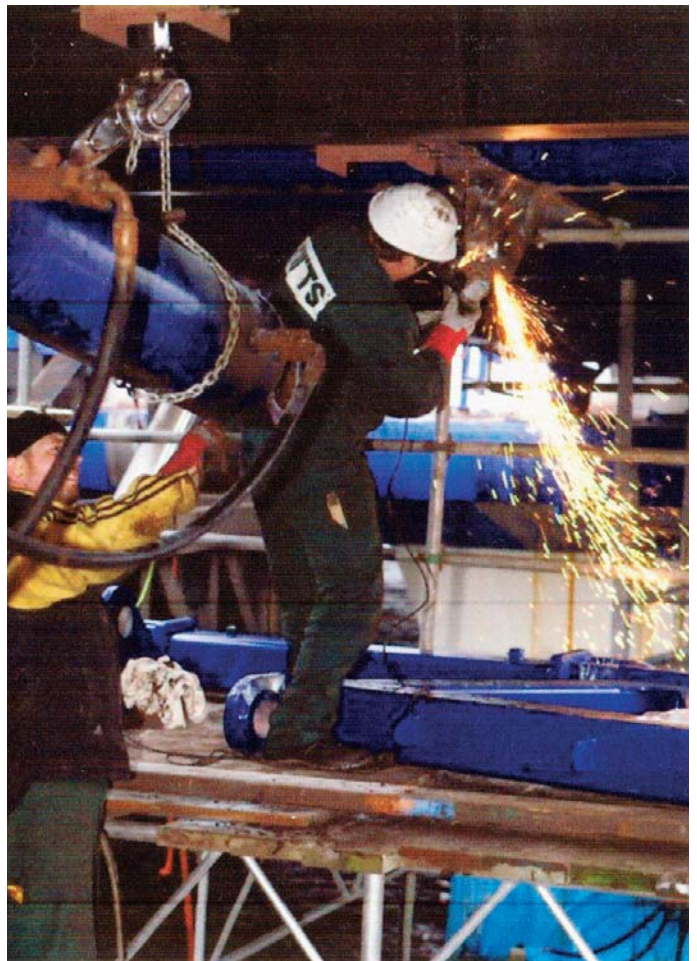
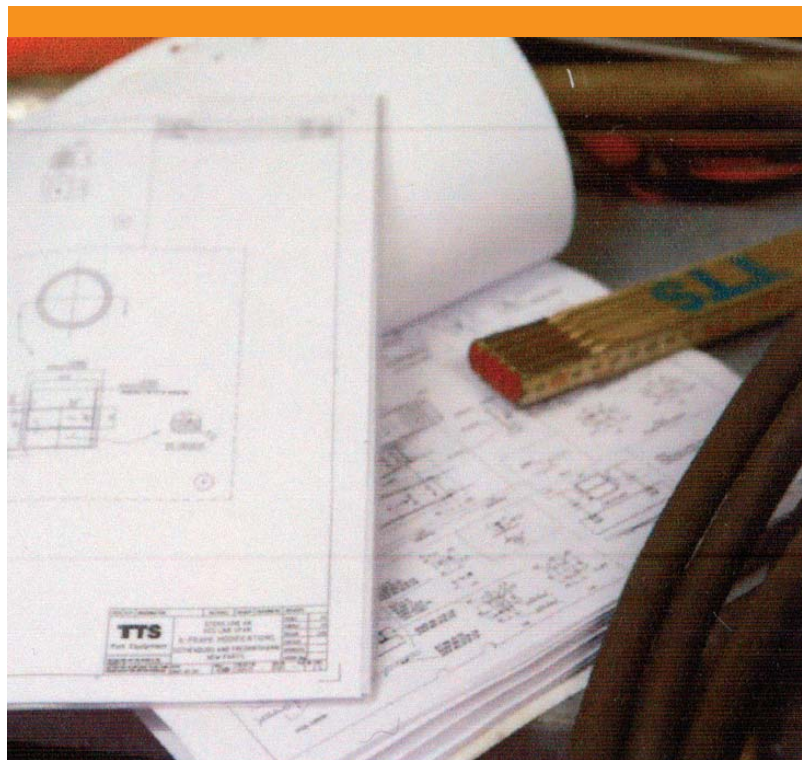
### Service agreements

Regular service and planned maintenance are necessary in order to minimize interruptions in material handling and production systems. TTS service agreements employ the company's comprehensive spare parts management system which allows for, among other features, spare parts stock keeping and the tracking of overhaul logistics.

### Service stations

TTS owns a number of companies and works with qualified service agents around the world. Flexible service teams are ready to travel worldwide 24 hours a day.

TTS service engineers are on duty 24 hours a day. Customers are free to request any of the qualified service engineers from any TTS service station who will then be dedicated to the customer for the duration of the service.



**TTS Port Equipment AB**  
Kämpegatan 3  
SE-411 04 Göteborg  
Sweden  
Tel: +46 31 725 79 00  
Fax: +46 31 725 78 04  
service@tts-port.se

**TTS Handling Systems AS**  
Holterkollvn 6,  
NO-1441 Drøbak  
Norway  
Tel: +47 64 90 79 10  
Fax: +47 64 93 16 63  
info@tts-hs.no

**TTS Liftec Oy**  
Tuotekatu 8  
FI-33840 Tampere  
Finland  
Tel: +358 3 31 401 400  
Fax: +358 3 31 401 444  
liftec@tts-liftec.fi